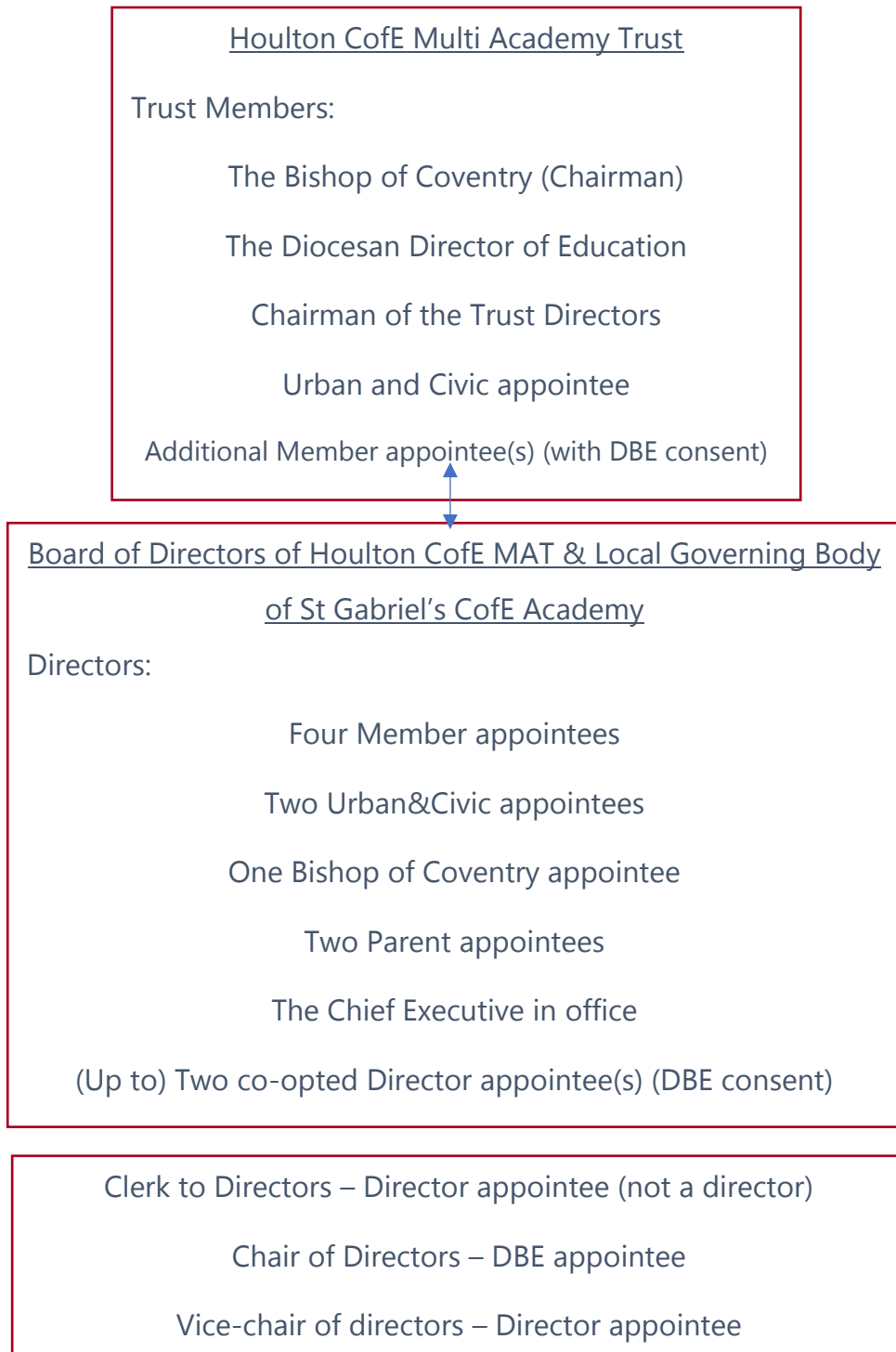


Leadership and Governance

The Houlton Church of England Multi Academy Trust Governance Plan

The following diagram summarises the governance structure for Houlton Church of England Multi Academy Trust and St Gabriel's Church of England Academy:



Trust Members

The Right Reverend Dr
Christopher Cocksworth,
Bishop of Coventry.

Chairman of the Trust
members.



Christopher Cocksworth, Bishop of Coventry, read Theology at the University of Manchester. After teaching in secondary education, he trained for ordination and pursued doctoral studies. Bishop Christopher has served in parochial and chaplaincy ministry and in theological education, latterly as Principal of Ridley Hall, Cambridge. In 2010 he was awarded an honorary degree of Doctor of Divinity by the University of London for his services to education. He has written a number of books and articles in the area of Christian theology and worship with his last book, Holding Together: Gospel, Church and Spirit being shortlisted for the 2011 Michael Ramsey Prize.

Bishop Christopher is Co-Chair of the Joint Implementation Commission of the Anglican-Methodist Covenant, and is Chair of the Faith and Order Commission of the Church of England. He entered the House of Lords in January 2013.

Mrs Linda Wainscot
Diocesan Director of Education



Linda is the Diocesan Director of Education responsible for 75 Schools across the Diocese. Currently the Diocese has over 80% of the Schools which are good or outstanding. Linda has been at the forefront of the Diocese of Coventry Multi Academy Trust from its inception and continues to advise the National Society on issues around Academies.

Linda has over 35 years' experience in a variety of educational contexts with teaching and leadership experience in Secondary, Primary, Teacher training and Further Education. As DDE, Linda serves on the National Executive Committee of the Association of Anglican Directors of Education.

Mr Douglas Tribe

Chairman of the Trust Directors



Douglas taught history, RE and geography for 34 years and served as Headteacher for the last 16 years; firstly in an urban 11-16 Comprehensive School before moving to an inner city 11-19 Community College. He has worked as an Inspector for humanities for Warwickshire.

From 2001 to 2010 Douglas worked as a School Improvement Partner for the Department of Education on the Academies Programme as well as for Warwickshire. At the same time he was a tutor and assessor to the National Professional Qualification for Headship (NPQSL) programme. He also advised the Northern Ireland Education Board on setting up a Heads' assessment programme.

Douglas has chaired several Interim Executive Boards for both Primary and Secondary sectors and is currently Chair of Governors for Wolvey CofE Primary School in Warwickshire.

He has a strong commitment to the development of young people to ensure they are well equipped to take advantage of the opportunities life offers. He has a strong faith based in the Anglican tradition and wishes to ensure that St Gabriel's is clearly seen to have a sound faith identity which embraces all.



Mr Richard Coppell

Urban&Civic appointee



Formerly head of retail development at Lend Lease, Richard has over 20 years' experience working in planning, development and regeneration. At Lend Lease, Richard promoted and delivered the evolution of Bluewater Shopping Centre and progressed the expansion of Touchwood Shopping Centre in Solihull. He was instrumental on the Elephant and Castle project in securing the Regeneration Agreement with Southwark Council. During his time at Lend Lease he was also the head of the regional residential development business. Prior to Lend Lease, Richard held positions at other development companies, working on Whitecity (Westfield London) for Chelsfield and Northern Quarter Portsmouth for Centros. Richard joined Urban&Civic in January 2015.

Trust Directors

<p>Mr Douglas Tribe</p> <p>Chairman of the Trust Directors and LGB Chair</p> <p>Bishop's appointee</p>	<p>See above</p>
<p>Rev'd Steve Gold</p> <p>Members' appointee</p>  A portrait of Rev'd Steve Gold, a man with short brown hair and glasses, wearing a blue clerical shirt and a grey suit jacket. He is smiling and looking towards the camera. The background is slightly blurred, showing green foliage.	<p>Steve is one of the Church of England's ministers in the Parish of Hillmorton, which includes all of the Houlton development - and has particular responsibility for leading the emerging church in Houlton. Steve will be living and working in Houlton, and over the coming few years he will be seeking to help build community across all parts of the emerging Houlton development. As part of this he will be taking a close and active role in building relationships with the staff, parents and children at St Gabriel's.</p> <p>Steve's professional background is in technology management and leadership - having had a wide number of senior roles in more than 20 years in technology and telecommunication company BT.</p>
<p>Dr Rex Pogson</p> <p>Members' appointee</p>  A portrait of Dr Rex Pogson, a man with short grey hair and glasses, wearing a light blue shirt, a dark tie, and a grey suit jacket. He is smiling and looking towards the camera. The background is dark and out of focus.	<p>After teaching history in secondary schools in Cambridge and Hull, Rex was deputy head of St Olave's Grammar School, Orpington, and then head of Lawrence Sheriff School in Rugby from 1985-98. He then spent 8 years as Director of the Warwickshire Arts Zone, a project designed to stimulate creativity and curricular innovation in schools at all age-groups across the county.</p> <p>In a voluntary capacity, he chaired the Coventry Diocesan Board of Education for 12 years, and the Coventry Diocesan Multi-Academy Trust for one year, and is still a director of both companies. He has been a director or trustee of four other local charitable companies or organisations, spent time as chair of two of them, and is still on the Boards of three.</p>

Mr Tony O'Brien

Members' appointee



Tony has over 45 years of experience in educational, cultural and creative projects – as a leader, mentor, governor, adviser, communicator, strategist, teacher, teacher trainer, facilitator, curriculum developer, author, project manager, centre director, cultural relations manager and country director. He has been a board member of various educational, spiritual and development organisations. He is passionate about education and living out his faith and values. He loves learning, especially about different cultures, helping people develop and connect, building and empowering teams and having fun. In his 38 years with the British Council (1978 – 2016), he averaged 4 years each in Morocco, London, Singapore, Hong Kong, Morocco, London, Sri Lanka, Poland and the Western Balkans. Before all this he was a volunteer teacher in Aswan, Egypt (1971-73) and a lecturer in the University of Tabriz, Iran (1975-77). He has lived in 13, worked in 72 and visited 84 countries. He has a law degree from Cambridge, a post-graduate diploma from Manchester and an MA from the Institute of Education in London. He has 3 published works and many professional articles. He is a trustee of St Paul's CofE Church and Chair of Trustees of The Well Christian Healing Centre, both in Leamington Spa.

Rev'd Margaret Simmons

Members' appointee



Margaret is currently the vicar of St John the Baptist church in Hillmorton, and has loved the privilege of serving as an ordained minister for nearly nine years. Prior to ordination, Margaret was a community children's nurse working with a successful Hospital at Home team in Rugby, which enabled children to be cared for at home during periods of illness, avoiding admissions to hospital. She has also worked as a School Nurse within several Leicester schools, enjoying being part of school communities, providing support and advice around a wide variety of health issues to children, parents and staff. She took a particular interest in promoting health and well-being, as well as supporting families and schools when facing difficult health and/or life changing events. She was a parent governor when her own children were at school. She is still passionate to see children and families thrive, and looks forward to serving St Gabriel's School on the team of Directors.

Mrs Johanne Thomas

Urban and Civic appointee



Johanne joined Urban&Civic from the Homes and Communities Agency where she led communications on some of the Midlands' largest housing and regeneration projects. Prior to that she grew and led an engagement team for the government's New Deal for Communities programme in North East Coventry. Johanne is a strong third sector advocate with a particular passion for using her skills to enable community leadership and governance, and in a voluntary capacity supports a local community association. Part of Urban&Civic's Houlton team, Johanne leads on local stakeholder engagement. She has been involved in St Gabriel's since its inception as part of the team that were successful in bidding to sponsor the school. She is now also part of the team setting up school on their site in Newark, continuing to draw on her Houlton experience as well as her personal journey as a parent of a four-year-old who started school in September 2017. With a degree in public relations with law, Johanne is a member of the Chartered Institute of Public Relations.

Mr Christopher Sawtell

Urban and Civic appointee



Chris graduated from Nottingham University with a first-class master's degree in civil engineering, during which time he held an undergraduate sponsored position with Arup, providing his first hands on practical experience in engineering design and construction management. Eager to gain commercial finance experience, Chris spent five years working at PwC in their London Top Tier audit and assurance division where he qualified as a chartered accountant gaining experience as a field manager on several FTSE listed and smaller privately owned clients. Chris joined Urban&Civic in 2011 as assistant to the Head of Finance with key responsibilities covering group financial reporting and analyst support on both existing and pipeline projects. In May 2014 alongside the Head of Finance Chris supported the successful reverse takeover of the AIM listed Terrace Hill Group plc and the simultaneous £170 million share placing on the London Stock Exchange. Following the enlargement of the Urban&Civic group, Chris heads a property finance team providing business planning, funding and analysis support to Urban&Civic's project teams across the Group.

Mr Andrew Taylor
Headteacher
Acting as Executive officer for
the Trust



Prior to joining St Gabriel's CofE Academy, Andrew worked as an Assistant Headteacher in the Affinity Federation of two large Coventry primary schools and was seconded by the DBE to lead a popular Warwickshire Junior school through a change of leadership. He holds a BA Honours degree and Qualified Teacher Status; he is also a designated Specialist Leader of Education and has a track record of 'Outstanding' primary teaching and extensive experience of school improvement at senior leadership level, holding a National Professional Qualification in Senior leadership. In his previous roles, Andrew has had particular responsibility for assessment and core subject leadership, developing staff and other leaders and raising standards of teaching and learning.

Parent Appointee

To be appointed

Parent Appointee

To be appointed

Co-opted Director

None

Co-opted Director

None